

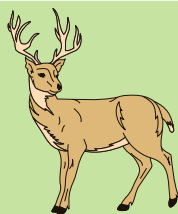
Pench National Park



- Pench National Park is located in the districts of Seoni and Chhindwara.
- Named after the pristine River Penge which flows through the park, Pench National Park is one of the most popular wildlife reserves in India.
- The park also has its mention in the famous story of 1894, 'The Jungle Book', penned down by the renowned English Author Rudyard Kipling.
- By Nagpur Station - 76KM
- By Nagpur Airport- 86KM



ITINERARY



Day 1: Reach Nagpur station or Airport before 8 AM. Proceed to Pench (3 Hours). Afternoon Safari. Overnight at Pench.

Day 2: Morning & Afternoon Safari. Overnight at Pench.

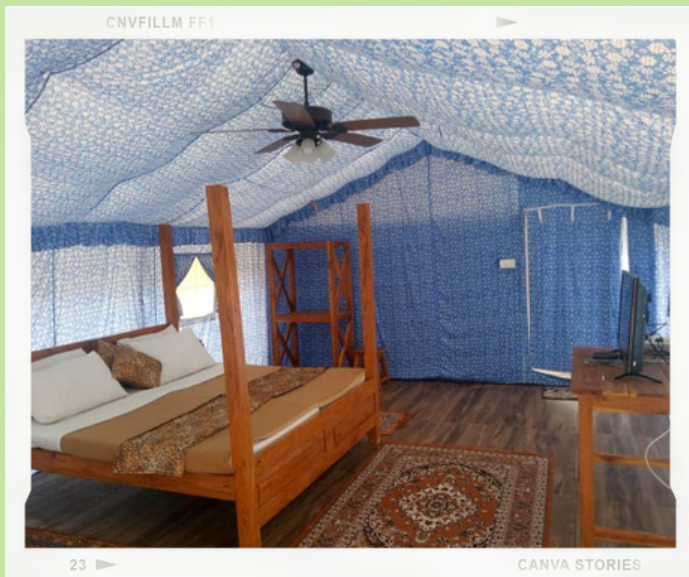
Day 3: Morning & Afternoon Safari. Overnight at Pench.

Day 4: Morning Safari, Check out and drive to Nagpur to board train or flight for your onward destination. Late evening flight is recommended.

Tour ends with Happy Memories!



ACCOMMODATION



Similar kind of Accommodation will be provided

COSTING

3N/4D: 6 Safaris : RS 29,900/- Per Person

DATES - 27th October To 30th October

INCLUSIONS

- 3N accommodation on Twin sharing basis .
- 3 Breakfast, 3 Lunch, 3 Dinner
- Transfers to & from Nagpur in AC Vehicle.
- 6 Safaris.
- Entry Fees and Gypsy Charges.
- Guide Fees.
- All applicable taxes.
- Photography session by Kedar Bhat.

EXCLUSIONS

- Meals taken during Air / Rail / Road Journey. Breakfast on the day of arrival & Lunch on the day of check out.
- Tips, laundry, telephone calls, porter etc.
- Camera fees if any.
- Rail or Air fare.
- Cost of any changes in schedule for factors beyond our control such as, train schedules, weather conditions, civil disturbance etc.
- Any medical emergency.
- Anything other than mentioned in the Inclusions.
- Services of Wildlife Expert.

NOTES



- Safari and Hotel bookings are subject to availability.
- Safaris once booked are non-refundable and non-transferable.
- Routes and zones for safaris are allotted by the forest department, we do not have any choice.
- Photo ID (Aadhar / Pan / Passport) of all the participants is compulsory for booking safaris, clients are required to carry the same in original during all safaris. (Checking of Ids is done at entry gate before every safari).
- Costing for single occupancy will be extra.
- Children below 5 years are free of cost.
- For Children between 5 to 11 years, charges are 60% of the adult cost. (There is no concession for Safaris as well as Pick up and drop as full seat is allotted).
- Any increase in the safari rates or hotel rates, difference will be borne by you Separately.
- Accommodation is provided in standard room, any changes in room category, will cost Extra.
- Any additional safari, night safari, elephant safari (if available), change in given itinerary, will cost extra.
- The company reserves the right to modify or alter the tour itinerary in case of unfavorable conditions. Changes shall be informed to guests at the earliest. Any additional charges, if applicable, are to be paid by the guest.

- If you require a Wildlife Expert to accompany your client. Charges will be extra.
- Disclaimer: Animal sightings in the jungle during safaris is a part of pure luck, we do not have any control on their movements

BOOKING PROCEDURE

- 50% amount to be paid for confirmation of booking.
- Full payment to be made 30 days before the date of departure.

CANCELLATION POLICY

- Rs. 2000/- Per person is non-refundable. In addition to this, Safari charges once booked are non-refundable, and will be deducted.
- 29 to 15 days prior to the date of departure – 50% of the tour cost.
- 14 to 7 days prior to the date of departure – 25% of the tour cost.
- Less than 7 days – No Refund.
- Air tickets or Train ticket: As per cancellation policy of Airlines and Indian Railways respectively.

Thane H.O.

Sarika - 9773328548 | Ninad - 9594038114

Ambernath

Aditya Padhye: 9890427342

Nashik

Anand Bora: 9822286750